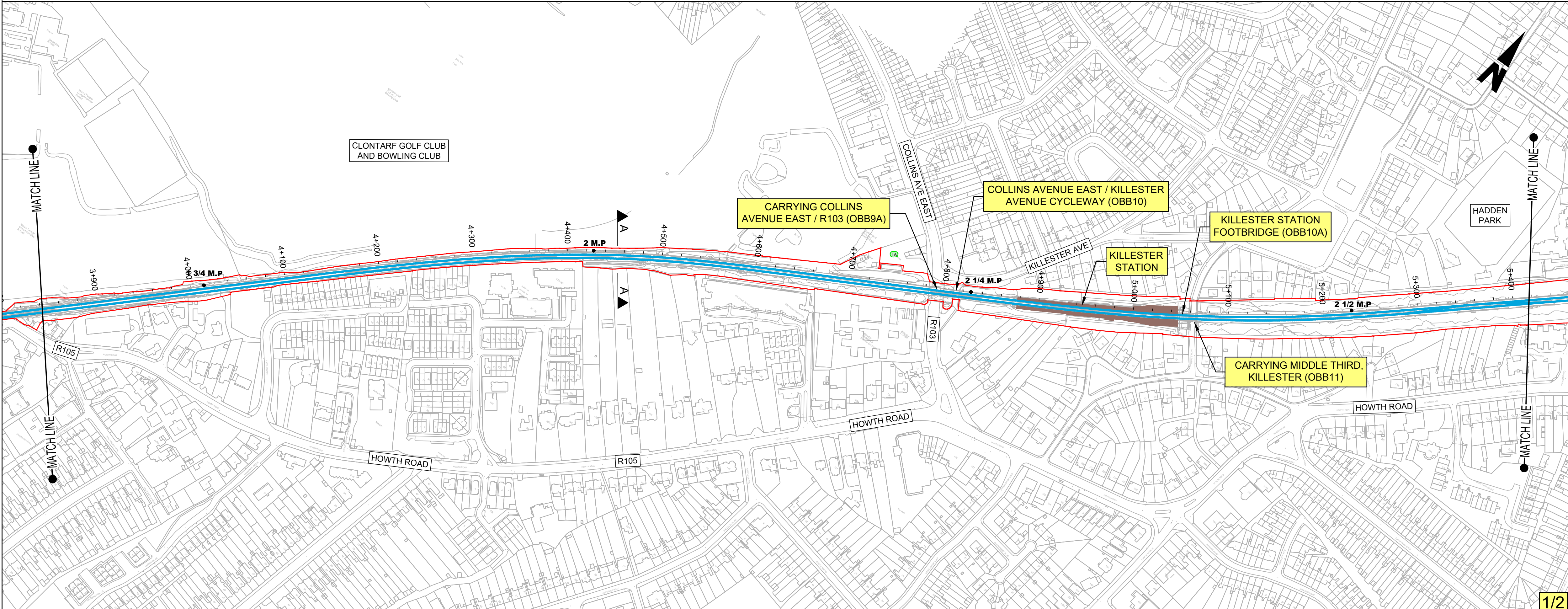


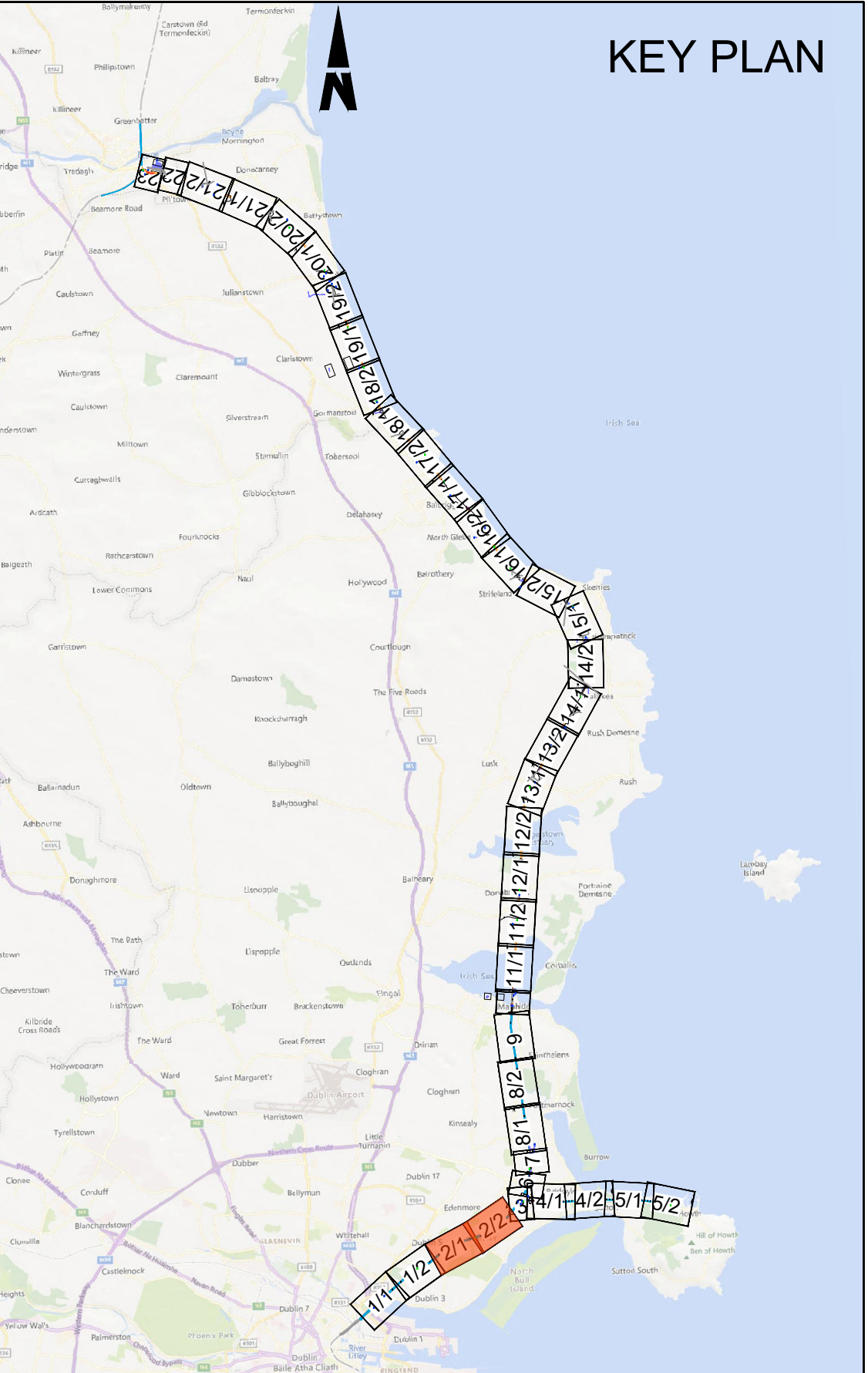
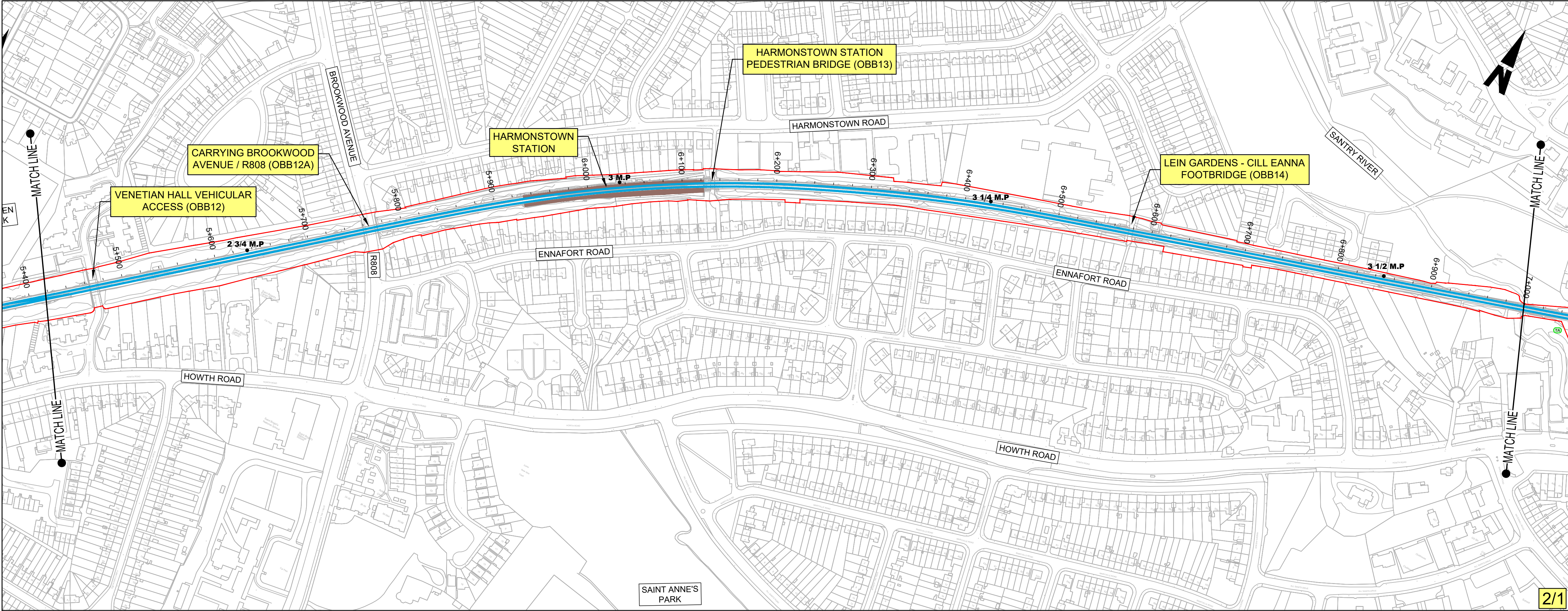
- NOTES:**
- THIS PLAN MUST BE READ IN CONJUNCTION WITH THE DRAFT RAILWAY ORDER SCHEDULES, THE ENVIRONMENTAL IMPACT ASSESSMENT REPORT AND THE RAILWAY ORDER PLANS.
 - PROJECT CHAINAGE IS IN KILOMETRES (KM), ROUTE MILE POSTS ARE SHOWN FOR INFORMATION.

- LEGEND:**
- DEVELOPMENT BOUNDARY
 - PROPOSED COMPOUND ACCESS POINTS
 - EXISTING TRACK ACCESS POINTS
 - MILEPOST
 - NEW ELECTRIFICATION AND / OR TRACK WORKS IN EXISTING RAIL CORRIDOR
 - EXISTING RAIL CORRIDOR - MINIMAL OR NO WORKS REQUIRED
 - EXISTING RAIL TRACK REMOVED
 - NEW ELECTRIFICATION IN EXISTING RAIL CORRIDOR
 - VIADUCT MODIFICATIONS
 - PARAPET MODIFICATIONS
 - 38KV OVERHEAD DIVERSION
 - 38KV UNDERGROUND DIVERSION
 - MV OVERHEAD DIVERSION
 - MV UNDERGROUND DIVERSION
 - LV OVERHEAD DIVERSION
 - LV UNDERGROUND DIVERSION
 - EIR OVERHEAD DIVERSION
 - EIR UNDERGROUND DIVERSION
 - BT UNDERGROUND DIVERSION
 - COMBINED SEWER DIVERSION
 - EXISTING UTILITIES ASSUMED POSITION
 - PROPOSED SUBSTATION / SUBSTATION COMPOUND
 - CONSTRUCTION COMPOUND
 - NEW, PROPOSED OR MODIFIED INFRASTRUCTURE
 - EXISTING STATION
 - PROPOSED PLATFORM
 - LOCAL AUTHORITY BOUNDARY
 - BRIDGES
 - OBXX EXISTING BRIDGE / ROAD OVER RAILWAY CORRIDOR
 - UBXX EXISTING BRIDGE / ROAD/RIVER UNDER RAILWAY CORRIDOR



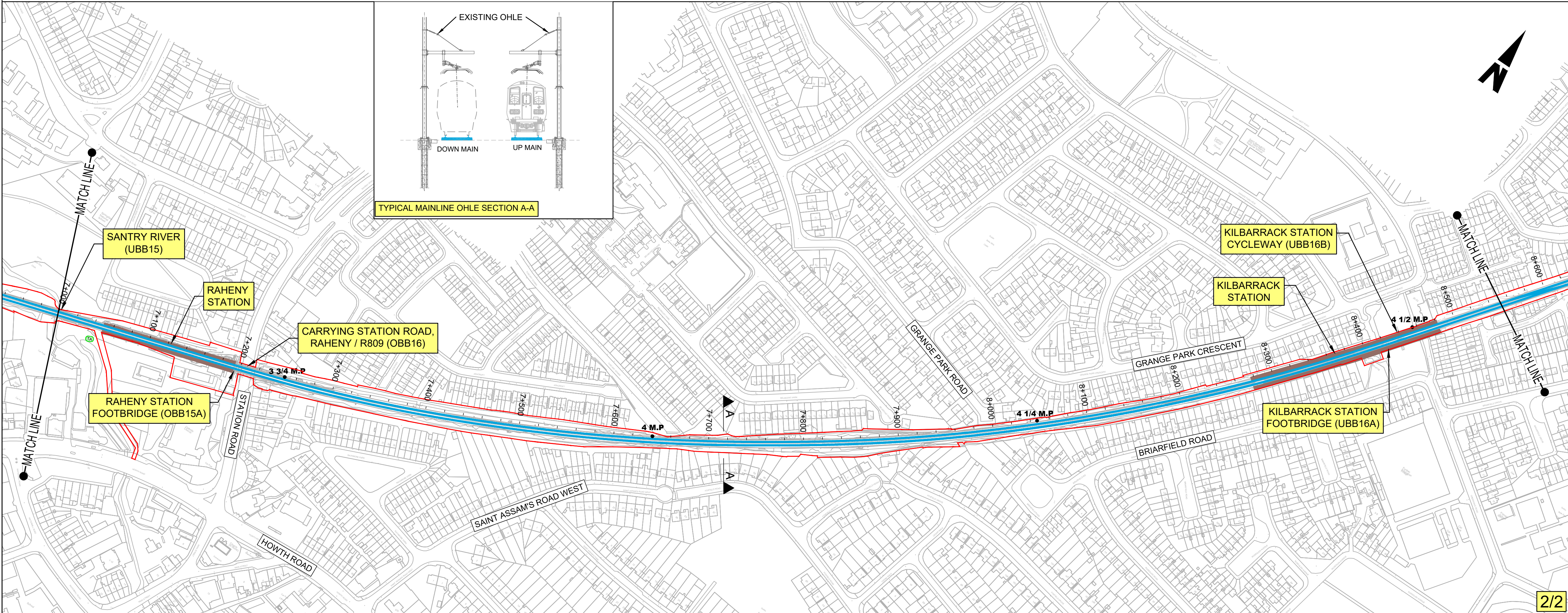
<div>Disclaimer</div> <div>© Irish Rail (2023). This drawing is confidential and the copyright in it is owned by Irish Rail. This drawing must not be either loaned, copied or otherwise reproduced in whole or in part or used for any purpose without the prior permission of Irish Rail.</div> <div>© OpenStreetMap contributors</div> <div>© Ordnance Survey Ireland and Government of Ireland. All O.S. data used for plans are printed under "Copyright Ordnance Survey Ireland 0038723 (OSI Aerial Data or OSI Lidar Data) & 2023/OSI_NMA_100 (OSI Vector Data)". All elevations are in metres and relate to OSI Geoid Model (OSGM02) Mean Head as defined by existing Project Control. All Co-ordinates are in Irish Transverse Mercator Grid (ITM) as defined by OSI active GPS station Tallaght College (TLLG).</div>		<div><div><div><div></div><div></div><div></div></div><div><div>DART+</div><div>Coastal North</div></div></div><div><div><div><div>NTA</div><div><div>Údaráil Náisiúnta Iomparáil</div><div>National Transport Authority</div></div></div><div><div><div></div><div></div></div><div>Tionscadal Éireann</div><div>Project Ireland</div><div>2040</div></div></div></div></div>		<table><tr><th>Rev</th><th>Date</th><th>Drn</th><th>Chk'd</th><th>App'd</th><th>Description</th></tr><tr><td>P01</td><td>21/02/2024</td><td>SMW</td><td>DB</td><td>GS</td><td>PLANNING ISSUE</td></tr><tr><td> </td><td> </td><td> </td><td> </td><td> </td><td> </td></tr><tr><td> </td><td> </td><td> </td><td> </td><td> </td><td> </td></tr><tr><td> </td><td> </td><td> </td><td> </td><td> </td><td> </td></tr></table>	Rev	Date	Drn	Chk'd	App'd	Description	P01	21/02/2024	SMW	DB	GS	PLANNING ISSUE																			<div><div><div></div><div>Iarnród Éireann</div><div>Irish Rail</div></div><div><div>Client</div><div>Engineering Designer</div></div></div>	<div><div>Project Title</div><div>DART+ COASTAL NORTH</div></div> <div><div>Drawing Title</div><div>NON-TECHNICAL SUMMARY DRAWINGS</div><div>CLONTARF ROAD STATION AND SURROUNDS</div></div>	<table><tr><td>Date</td><td>14/04/2023</td><td>Scale</td><td>1:2500 @ A1 1:5000 @ A3</td><td>Drawn</td><td>SR</td><td>Checked</td><td>RS</td><td>Approved</td><td>GS</td></tr><tr><td>Project Code</td><td>D+WP56</td><td>Originator Code</td><td>ARP</td><td colspan="2">QMS Code</td><td colspan="3">280275-00</td></tr></table>	Date	14/04/2023	Scale	1:2500 @ A1 1:5000 @ A3	Drawn	SR	Checked	RS	Approved	GS	Project Code	D+WP56	Originator Code	ARP	QMS Code		280275-00			<div><div>Drawing File Name</div><div>D+WP56-ARP-P3-NL-DR-GE-002001</div></div> <div><div>Sheet Number</div><div>01 of 23</div></div> <div><div>Status</div><div>S3</div></div> <div><div>Rev</div><div>P01</div></div>
Rev	Date	Drn	Chk'd	App'd	Description																																																				
P01	21/02/2024	SMW	DB	GS	PLANNING ISSUE																																																				
Date	14/04/2023	Scale	1:2500 @ A1 1:5000 @ A3	Drawn	SR	Checked	RS	Approved	GS																																																
Project Code	D+WP56	Originator Code	ARP	QMS Code		280275-00																																																			

DO NOT SCALE USE FIGURED DIMENSIONS ONLY



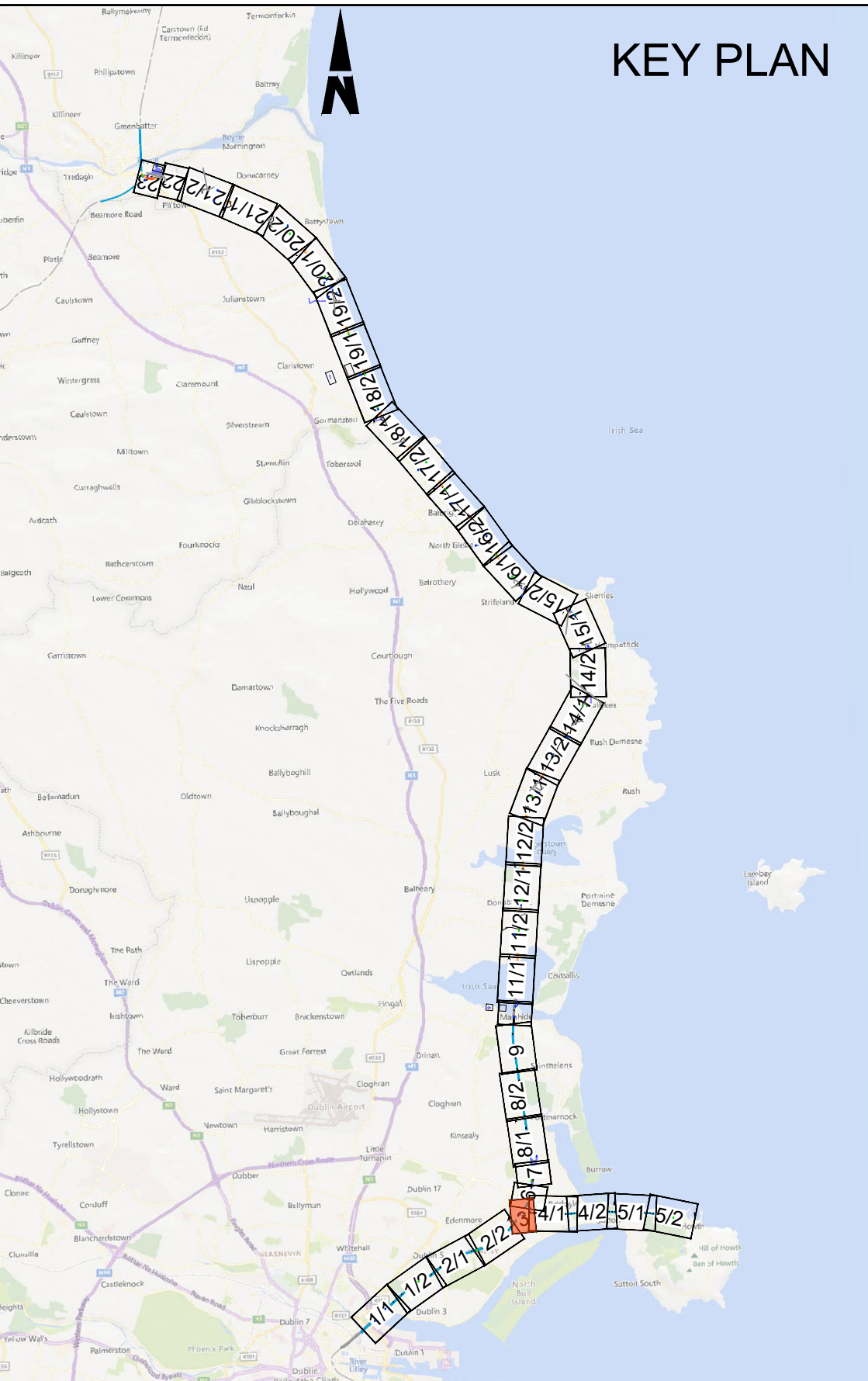
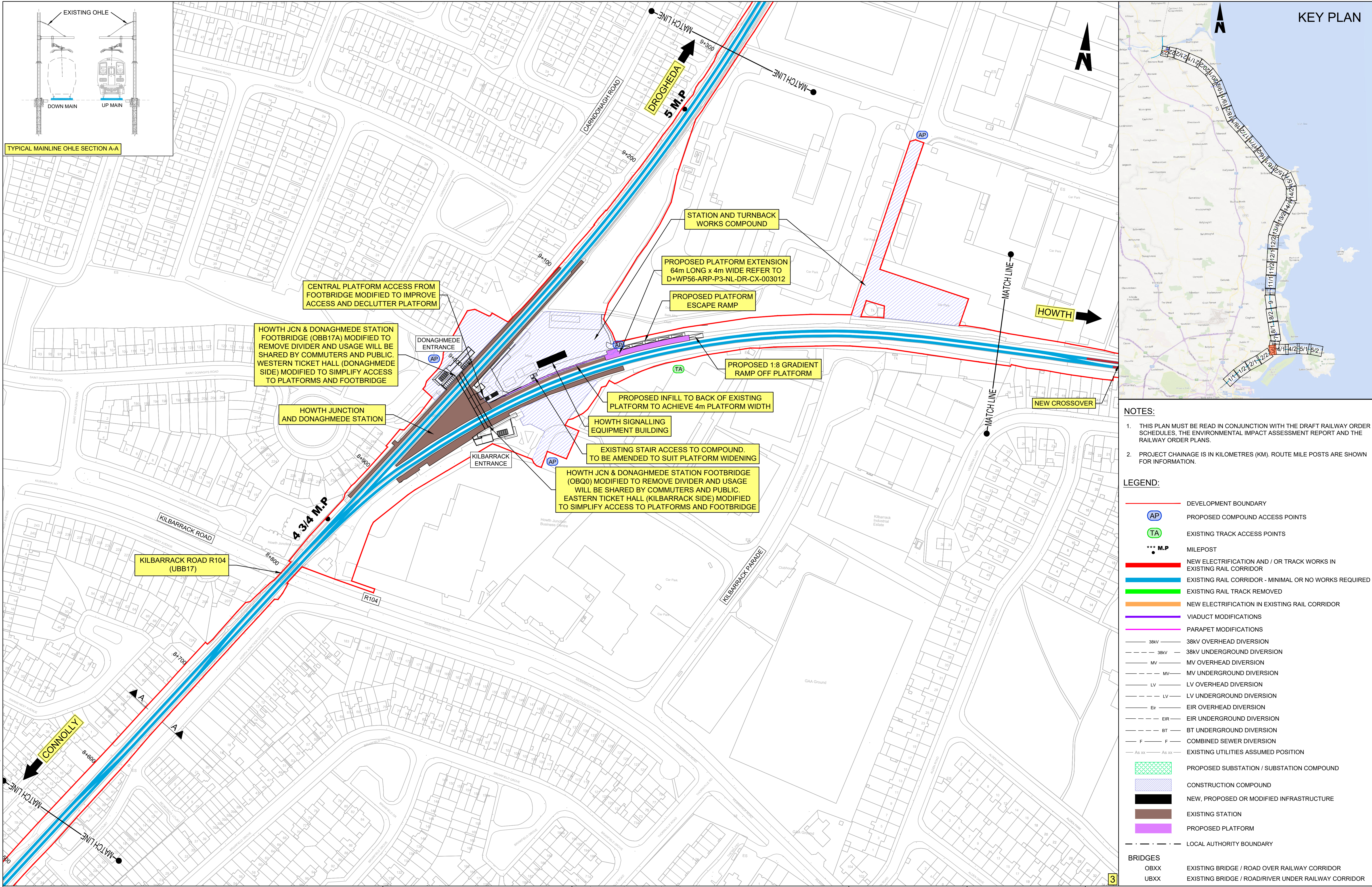
- NOTES:
- THIS PLAN MUST BE READ IN CONJUNCTION WITH THE DRAFT RAILWAY ORDER SCHEDULES, THE ENVIRONMENTAL IMPACT ASSESSMENT REPORT AND THE RAILWAY ORDER PLANS.
 - PROJECT CHAINAGE IS IN KILOMETRES (KM). ROUTE MILE POSTS ARE SHOWN FOR INFORMATION.

- LEGEND:
- DEVELOPMENT BOUNDARY
 - PROPOSED COMPOUND ACCESS POINTS (AP)
 - EXISTING TRACK ACCESS POINTS (TA)
 - MILEPOST (M.P.)
 - NEW ELECTRIFICATION AND / OR TRACK WORKS IN EXISTING RAIL CORRIDOR
 - EXISTING RAIL CORRIDOR - MINIMAL OR NO WORKS REQUIRED
 - EXISTING RAIL TRACK REMOVED
 - NEW ELECTRIFICATION IN EXISTING RAIL CORRIDOR
 - VIADUCT MODIFICATIONS
 - PARAPET MODIFICATIONS
 - 38kV OVERHEAD DIVERSION
 - 38kV UNDERGROUND DIVERSION
 - MV OVERHEAD DIVERSION
 - MV UNDERGROUND DIVERSION
 - LV OVERHEAD DIVERSION
 - LV UNDERGROUND DIVERSION
 - EIR OVERHEAD DIVERSION
 - EIR UNDERGROUND DIVERSION
 - BT UNDERGROUND DIVERSION
 - COMBINED SEWER DIVERSION
 - EXISTING UTILITIES ASSUMED POSITION
 - PROPOSED SUBSTATION / SUBSTATION COMPOUND
 - CONSTRUCTION COMPOUND
 - NEW, PROPOSED OR MODIFIED INFRASTRUCTURE
 - EXISTING STATION
 - PROPOSED PLATFORM
 - LOCAL AUTHORITY BOUNDARY
 - BRIDGES: OBXX (EXISTING BRIDGE / ROAD OVER RAILWAY CORRIDOR), UBXX (EXISTING BRIDGE / ROAD/RIVER UNDER RAILWAY CORRIDOR)



<div>Disclaimer</div> <div>© Irish Rail (2023). This drawing is confidential and the copyright in it is owned by Irish Rail. This drawing must not be either loaned, copied or otherwise reproduced in whole or in part or used for any purpose without the prior permission of Irish Rail.</div> <div>© Ordnance Survey Ireland and Government of Ireland. All O.S. data used for plans are printed under "Copyright Ordnance Survey Ireland 0038723 (OSI Aerial Data or OSI Lidar Data) & 2023 OSI, NMA, 100 (OSI Vector Data)". All elevations are in metres and relate to OSI Geoid Model (OSGM02) Mean Head as defined by existing Project Control. All Co-ordinates are in Irish Transverse Mercator Grid (ITM) as defined by OSI active GPS station Tallaght College (TLLG).</div>		<div><div><div><div></div><div></div><div></div></div><div><div>DART+</div><div>Coastal North</div></div></div><div><div><div><div>NTA</div><div>Údaráil Náisiúnta Iomparáil</div><div>National Transport Authority</div></div><div><div><div></div><div></div></div><div><div>Tionscadal Éireann</div><div>Project Ireland</div><div>2040</div></div></div></div></div></div>		<table><tr><th>Rev</th><th>Date</th><th>Drm</th><th>Chk'd</th><th>App'd</th><th>Description</th></tr><tr><td>P01</td><td>21/02/2024</td><td>SMW</td><td>DB</td><td>GS</td><td>PLANNING ISSUE</td></tr><tr><td> </td><td> </td><td> </td><td> </td><td> </td><td> </td></tr><tr><td> </td><td> </td><td> </td><td> </td><td> </td><td> </td></tr><tr><td> </td><td> </td><td> </td><td> </td><td> </td><td> </td></tr></table>	Rev	Date	Drm	Chk'd	App'd	Description	P01	21/02/2024	SMW	DB	GS	PLANNING ISSUE																			<div><div><div><div></div><div></div><div></div></div><div><div>Iarnród Éireann</div><div>Irish Rail</div></div></div><div><div><div>Date</div><div>14/04/2023</div></div><div><div>Scale</div><div>1:2500 @ A1</div><div>1:5000 @ A3</div></div></div><div><div><div>Project Code</div><div>D+WP56</div></div><div><div>Originator Code</div><div>ARP</div></div></div></div> <div><div><div>Engineering Designer</div><div>ARUP</div></div><div><div><div>Drawn</div><div>SR</div></div><div><div>Checked</div><div>RS</div></div><div><div>Approved</div><div>GS</div></div></div></div>	<div><div><div>Project Title</div><div>DART+ COASTAL NORTH</div></div><div><div><div>Drawing Title</div><div>NON-TECHNICAL SUMMARY DRAWINGS</div><div>HARMONSTOWN STATION TO KILBARRACK STATION AND SURROUNDS</div></div></div><div><div><div>Drawing File Name</div><div>D+WP56-ARP-P3-NL-DR-GE-002002</div></div><div><div><div>Sheet Number</div><div>02 of 23</div></div><div><div>Status</div><div>S3</div></div><div><div>Rev</div><div>P01</div></div></div></div></div>
Rev	Date	Drm	Chk'd	App'd	Description																															
P01	21/02/2024	SMW	DB	GS	PLANNING ISSUE																															

DO NOT SCALE USE FIGURED DIMENSIONS ONLY



- NOTES:**
- THIS PLAN MUST BE READ IN CONJUNCTION WITH THE DRAFT RAILWAY ORDER SCHEDULES, THE ENVIRONMENTAL IMPACT ASSESSMENT REPORT AND THE RAILWAY ORDER PLANS.
 - PROJECT CHAINAGE IS IN KILOMETRES (KM). ROUTE MILE POSTS ARE SHOWN FOR INFORMATION.

- LEGEND:**
- DEVELOPMENT BOUNDARY
 - PROPOSED COMPOUND ACCESS POINTS (AP)
 - EXISTING TRACK ACCESS POINTS (TA)
 - MILEPOST (M.P.)
 - NEW ELECTRIFICATION AND / OR TRACK WORKS IN EXISTING RAIL CORRIDOR
 - EXISTING RAIL CORRIDOR - MINIMAL OR NO WORKS REQUIRED
 - EXISTING RAIL TRACK REMOVED
 - NEW ELECTRIFICATION IN EXISTING RAIL CORRIDOR
 - VIADUCT MODIFICATIONS
 - PARAPET MODIFICATIONS
 - 38kV OVERHEAD DIVERSION
 - 38kV UNDERGROUND DIVERSION
 - MV OVERHEAD DIVERSION
 - MV UNDERGROUND DIVERSION
 - LV OVERHEAD DIVERSION
 - LV UNDERGROUND DIVERSION
 - EIR OVERHEAD DIVERSION
 - EIR UNDERGROUND DIVERSION
 - BT UNDERGROUND DIVERSION
 - COMBINED SEWER DIVERSION
 - EXISTING UTILITIES ASSUMED POSITION
 - PROPOSED SUBSTATION / SUBSTATION COMPOUND
 - CONSTRUCTION COMPOUND
 - NEW, PROPOSED OR MODIFIED INFRASTRUCTURE
 - EXISTING STATION
 - PROPOSED PLATFORM
 - LOCAL AUTHORITY BOUNDARY
 - BRIDGES
 - OBXX EXISTING BRIDGE / ROAD OVER RAILWAY CORRIDOR
 - UBXX EXISTING BRIDGE / ROAD/RIVER UNDER RAILWAY CORRIDOR

Disclaimer

© Irish Rail (2023). This drawing is confidential and the copyright in it is owned by Irish Rail. This drawing must not be either loaned, copied or otherwise reproduced in whole or in part or used for any purpose without the prior permission of Irish Rail.

© OpenStreetMap contributors

© Ordnance Survey Ireland and Government of Ireland. All O.S. data used for plans are printed under "Copyright Ordnance Survey Ireland 0038723 (OSI Aerial Data or OSI Lidar Data) & 2023 OSI, NMA, 100 (OSI Vector Data)". All elevations are in metres and relate to OSI Geoid Model (OSGM02) Mean Head as defined by existing Project Control. All Co-ordinates are in Irish Transverse Mercator Grid (ITM) as defined by OSI active GPS station Tallaght College (TLLG).

DART+ Coastal North

NTA
National Transport Authority

Tionscadal Éireann
Project Ireland
2040

Rev	Date	Drm	Chk'd	App'd	Description
P01	21/02/2024	SMW	DB	GS	PLANNING ISSUE

Client
Iarnród Éireann
Irish Rail

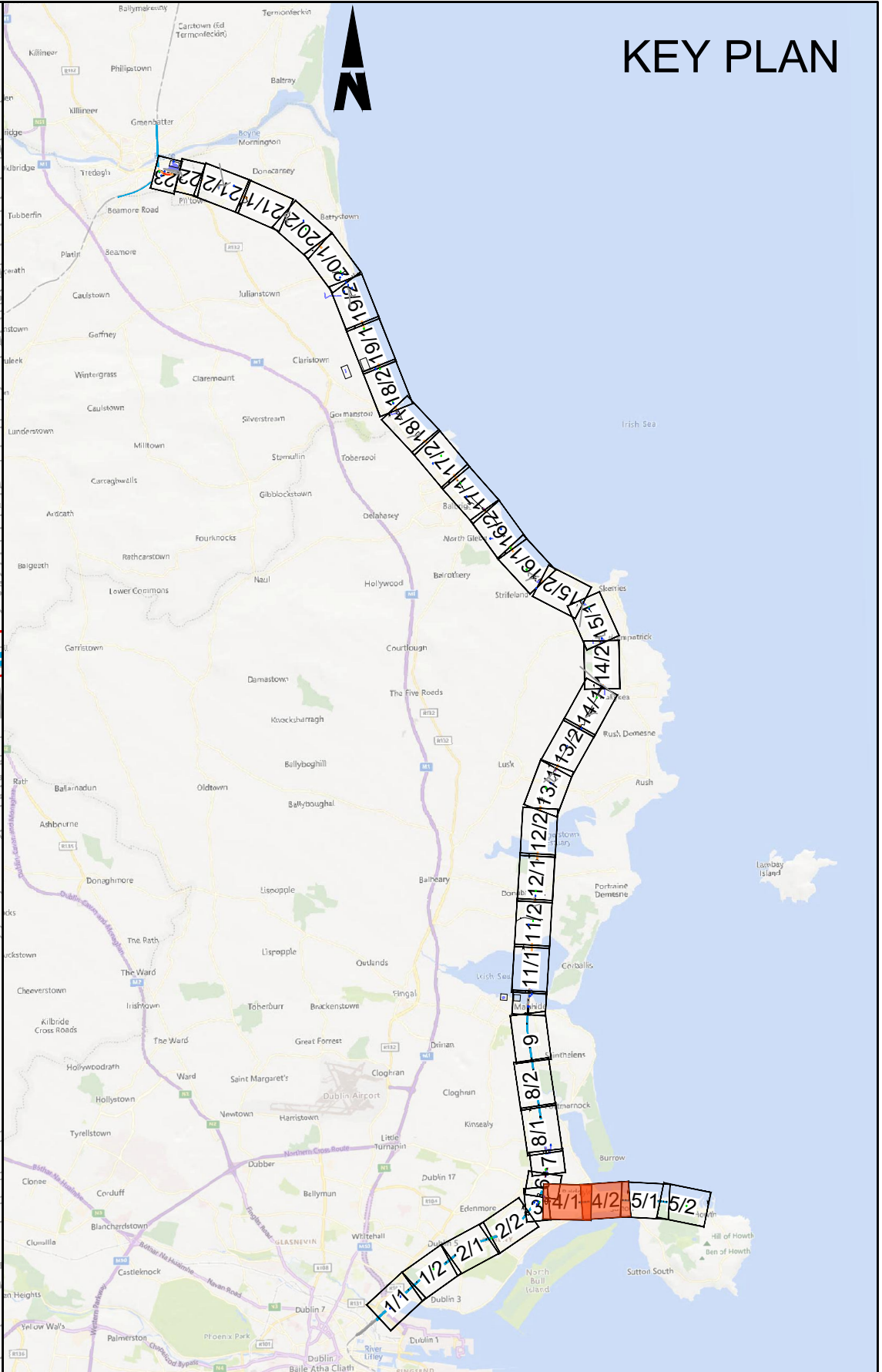
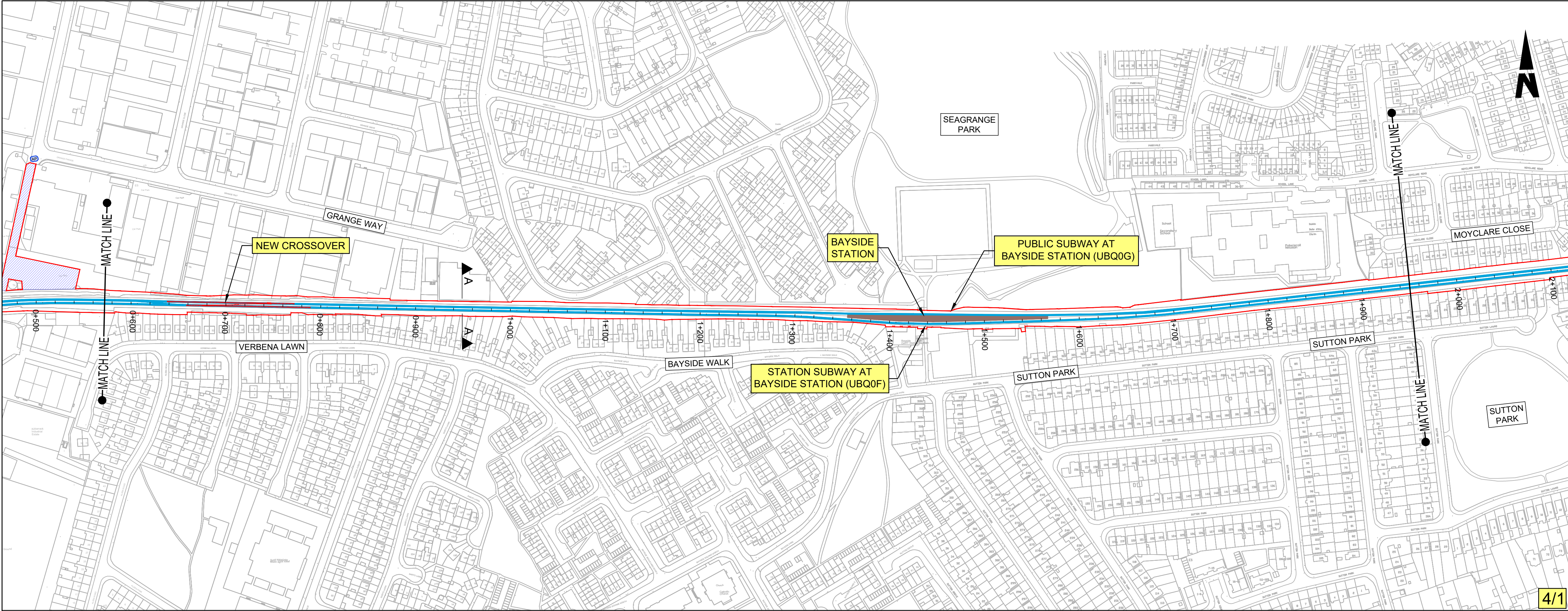
Engineering Designer
ARUP

Date	Scale	Drawn	Checked	Approved
14/04/2023	1:1250 @ A1 1:2500 @ A3	SR	RS	GS

Project Code	Originator Code	QMS Code
D+WP56	ARP	280275-00

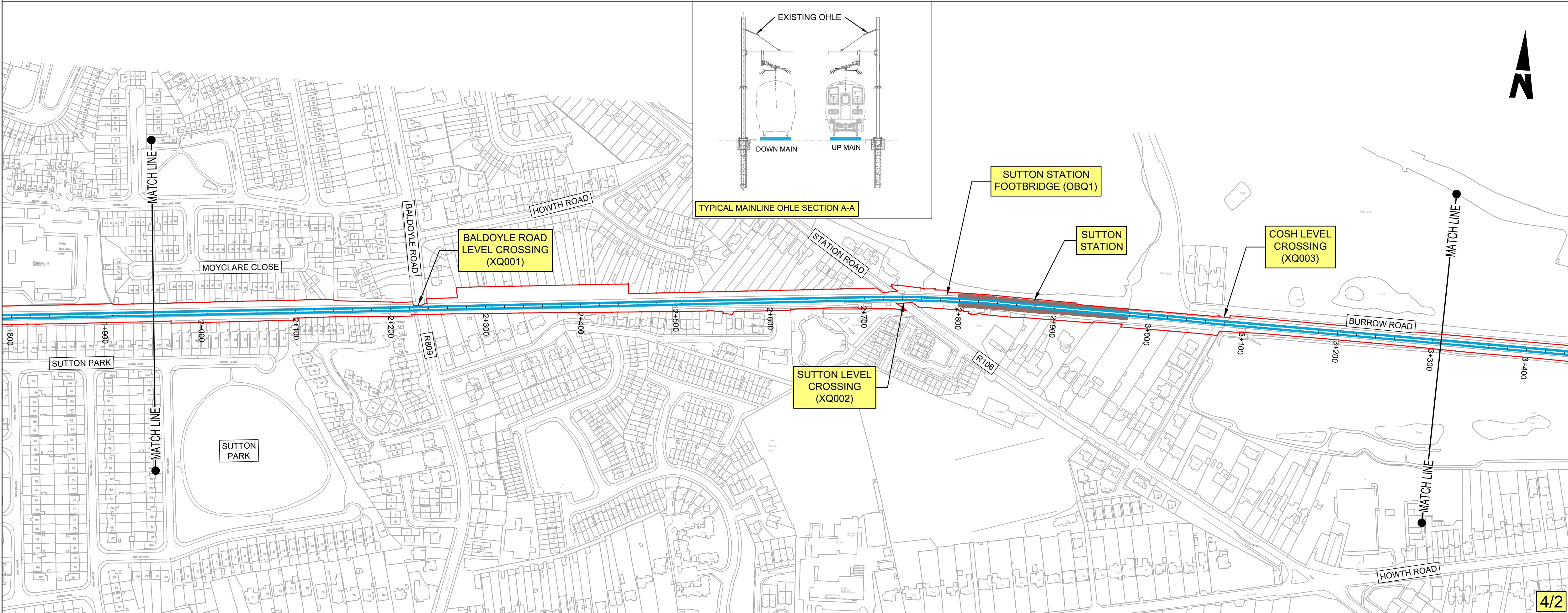
Drawing File Name	Sheet Number	Status	Rev
D+WP56-ARP-P3-NL-DR-GE-002003	03 of 23	S3	P01

DO NOT SCALE USE FIGURED DIMENSIONS ONLY



- NOTES:
- THIS PLAN MUST BE READ IN CONJUNCTION WITH THE DRAFT RAILWAY ORDER SCHEDULES, THE ENVIRONMENTAL IMPACT ASSESSMENT REPORT AND THE RAILWAY ORDER PLANS.
 - PROJECT CHAINAGE IS IN KILOMETRES (KM). ROUTE MILE POSTS ARE SHOWN FOR INFORMATION.

- LEGEND:
- DEVELOPMENT BOUNDARY
 - PROPOSED COMPOUND ACCESS POINTS (AP)
 - EXISTING TRACK ACCESS POINTS (TA)
 - MILEPOST (M.P.)
 - NEW ELECTRIFICATION AND / OR TRACK WORKS IN EXISTING RAIL CORRIDOR
 - EXISTING RAIL CORRIDOR - MINIMAL OR NO WORKS REQUIRED
 - EXISTING RAIL TRACK REMOVED
 - NEW ELECTRIFICATION IN EXISTING RAIL CORRIDOR
 - VIADUCT MODIFICATIONS
 - PARAPET MODIFICATIONS
 - 38kV OVERHEAD DIVERSION
 - 38kV UNDERGROUND DIVERSION
 - MV OVERHEAD DIVERSION
 - MV UNDERGROUND DIVERSION
 - LV OVERHEAD DIVERSION
 - LV UNDERGROUND DIVERSION
 - EIR OVERHEAD DIVERSION
 - EIR UNDERGROUND DIVERSION
 - BT UNDERGROUND DIVERSION
 - COMBINED SEWER DIVERSION
 - EXISTING UTILITIES ASSUMED POSITION
 - PROPOSED SUBSTATION / SUBSTATION COMPOUND
 - CONSTRUCTION COMPOUND
 - NEW, PROPOSED OR MODIFIED INFRASTRUCTURE
 - EXISTING STATION
 - PROPOSED PLATFORM
 - LOCAL AUTHORITY BOUNDARY
 - BRIDGES: OBXX (EXISTING BRIDGE / ROAD OVER RAILWAY CORRIDOR), UBXX (EXISTING BRIDGE / ROAD/RIVER UNDER RAILWAY CORRIDOR)



Disclaimer

© Irish Rail (2023). This drawing is confidential and the copyright in it is owned by Irish Rail. This drawing must not be either loaned, copied or otherwise reproduced in whole or in part or used for any purpose without the prior permission of Irish Rail.

© OpenStreetMap contributors

© Ordnance Survey Ireland and Government of Ireland. All O.S. data used for plans are printed under "Copyright Ordnance Survey Ireland 0038723 (OSI Aerial Data or OSI Lidar Data) & 2023 OSI, NMA, 100 (OSI Vector Data)". All elevations are in metres and relate to OSI Geoid Model (OSGM02) Mean Head as defined by existing Project Control. All Co-ordinates are in Irish Transverse Mercator Grid (ITM) as defined by OSI active GPS station Tallaght College (TLLG).

DART+ Coastal North

NTA National Transport Authority

Tionascadail Éireann Project Ireland 2040

Rev	Date	Drm	Chk'd	App'd	Description
P01	21/02/2024	SMW	DB	GS	PLANNING ISSUE

Client: **Iarnród Éireann Irish Rail**

Engineering Designer: **ARUP**

Date	Scale	Drawn	Checked	Approved
14/04/2023	1:2500 @ A1 1:5000 @ A3	SR	RS	GS

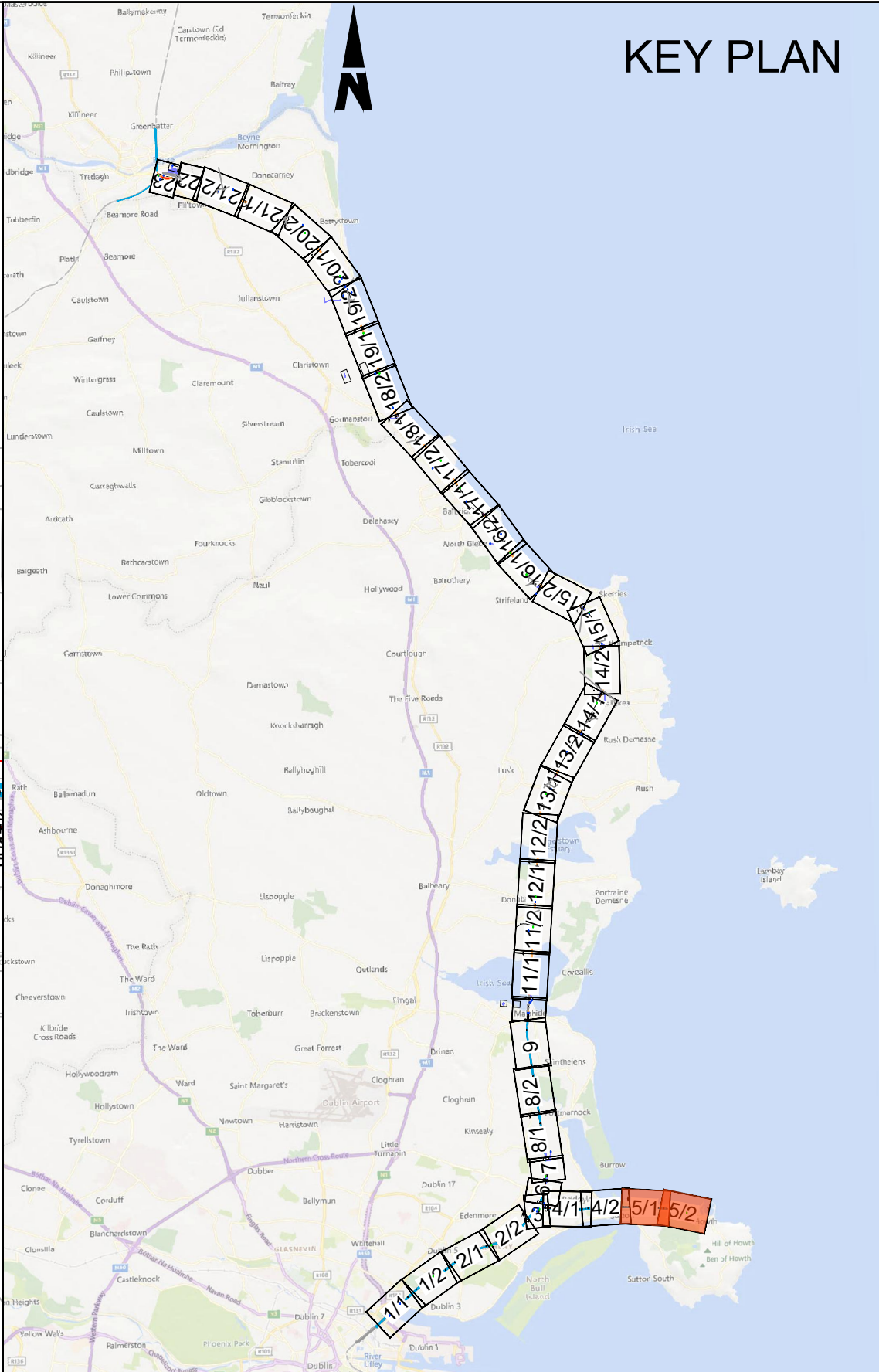
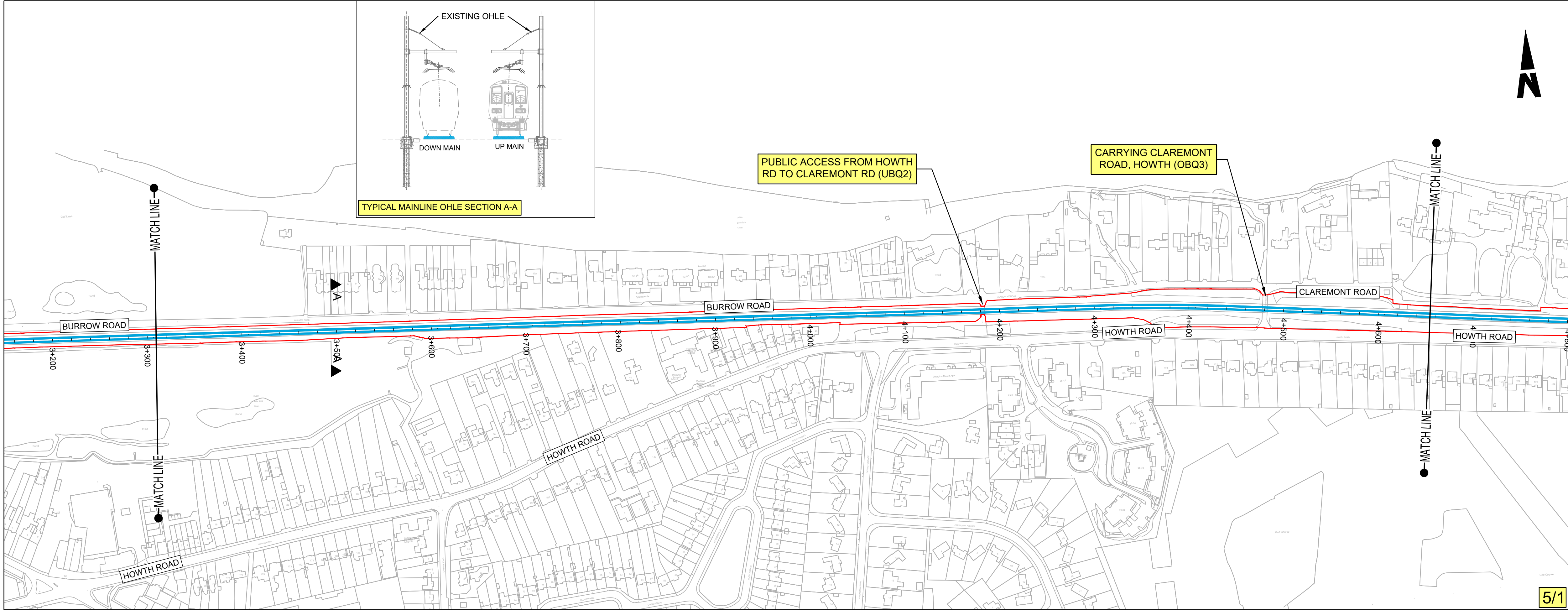
Project Code	Originator Code	QMS Code
D+WP56	ARP	280275-00

Project Title: **DART+ COASTAL NORTH**

Drawing Title: **NON-TECHNICAL SUMMARY DRAWINGS
BAYSIDE STATION TO SUTTON STATION AND SURROUNDS**

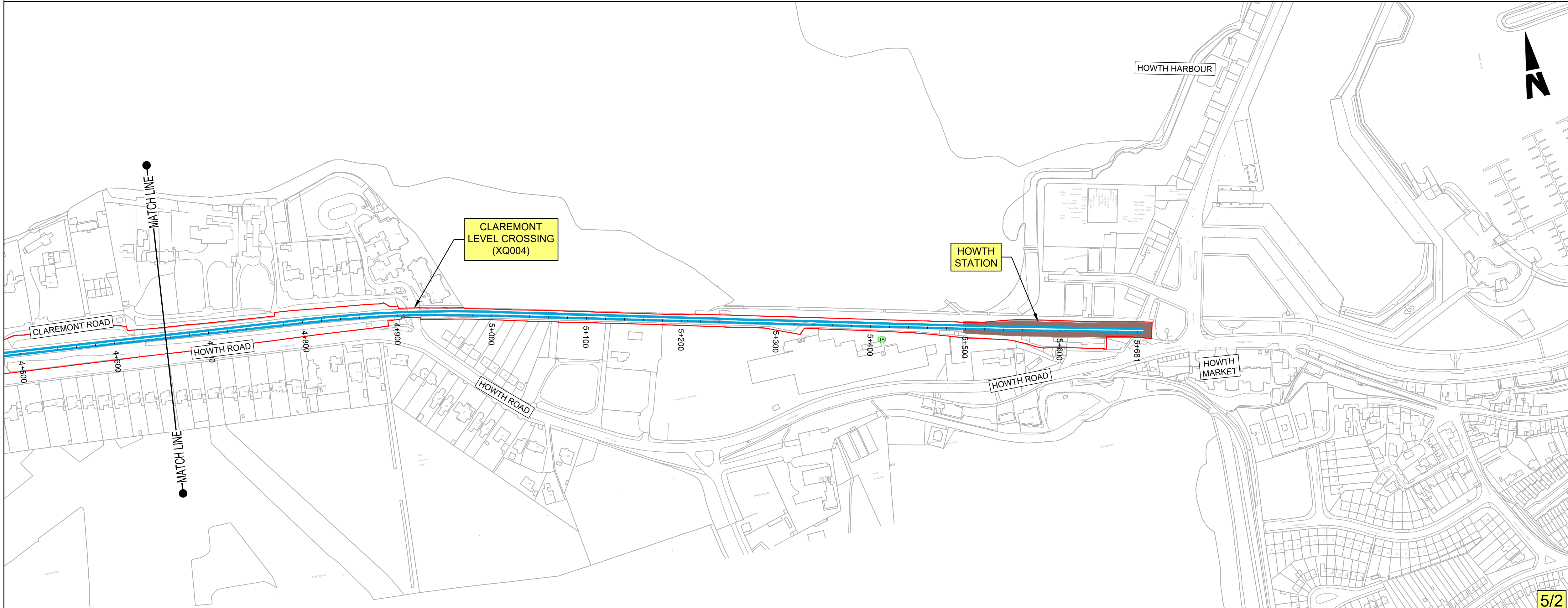
Drawing File Name	Sheet Number	Status	Rev
D+WP56-ARP-P3-NL-DR-GE-002004	04 of 23	S3	P01

DO NOT SCALE USE FIGURED DIMENSIONS ONLY



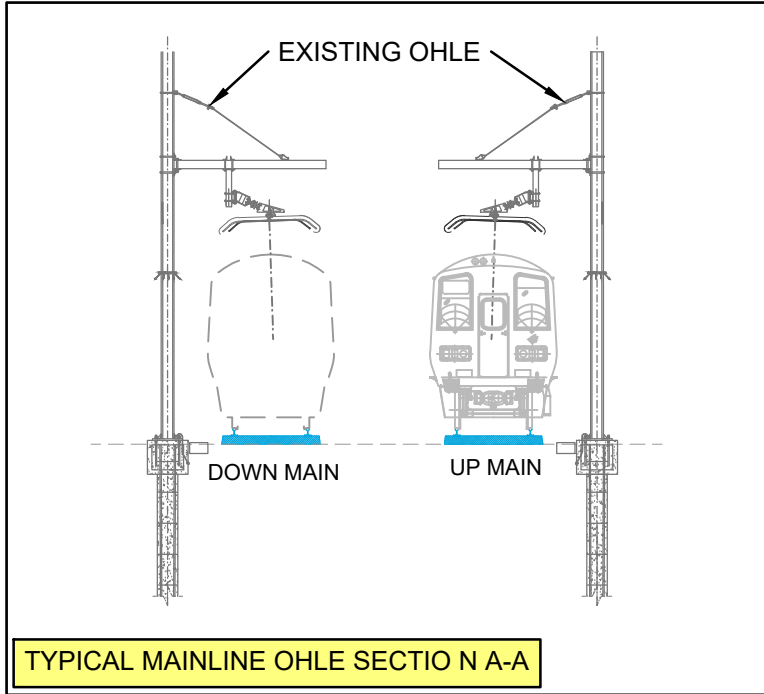
- NOTES:**
- THIS PLAN MUST BE READ IN CONJUNCTION WITH THE DRAFT RAILWAY ORDER SCHEDULES, THE ENVIRONMENTAL IMPACT ASSESSMENT REPORT AND THE RAILWAY ORDER PLANS.
 - PROJECT CHAINAGE IS IN KILOMETRES (KM). ROUTE MILE POSTS ARE SHOWN FOR INFORMATION.

- LEGEND:**
- DEVELOPMENT BOUNDARY
 - PROPOSED COMPOUND ACCESS POINTS
 - EXISTING TRACK ACCESS POINTS
 - MILEPOST
 - NEW ELECTRIFICATION AND / OR TRACK WORKS IN EXISTING RAIL CORRIDOR
 - EXISTING RAIL CORRIDOR - MINIMAL OR NO WORKS REQUIRED
 - EXISTING RAIL TRACK REMOVED
 - NEW ELECTRIFICATION IN EXISTING RAIL CORRIDOR
 - VIADUCT MODIFICATIONS
 - PARAPET MODIFICATIONS
 - 38kV OVERHEAD DIVERSION
 - 38kV UNDERGROUND DIVERSION
 - MV OVERHEAD DIVERSION
 - MV UNDERGROUND DIVERSION
 - LV OVERHEAD DIVERSION
 - LV UNDERGROUND DIVERSION
 - EIR OVERHEAD DIVERSION
 - EIR UNDERGROUND DIVERSION
 - BT UNDERGROUND DIVERSION
 - COMBINED SEWER DIVERSION
 - EXISTING UTILITIES ASSUMED POSITION
 - PROPOSED SUBSTATION / SUBSTATION COMPOUND
 - CONSTRUCTION COMPOUND
 - NEW, PROPOSED OR MODIFIED INFRASTRUCTURE
 - EXISTING STATION
 - PROPOSED PLATFORM
 - LOCAL AUTHORITY BOUNDARY
 - BRIDGES
 - OBXX EXISTING BRIDGE / ROAD OVER RAILWAY CORRIDOR
 - UBXX EXISTING BRIDGE / ROAD/RIVER UNDER RAILWAY CORRIDOR

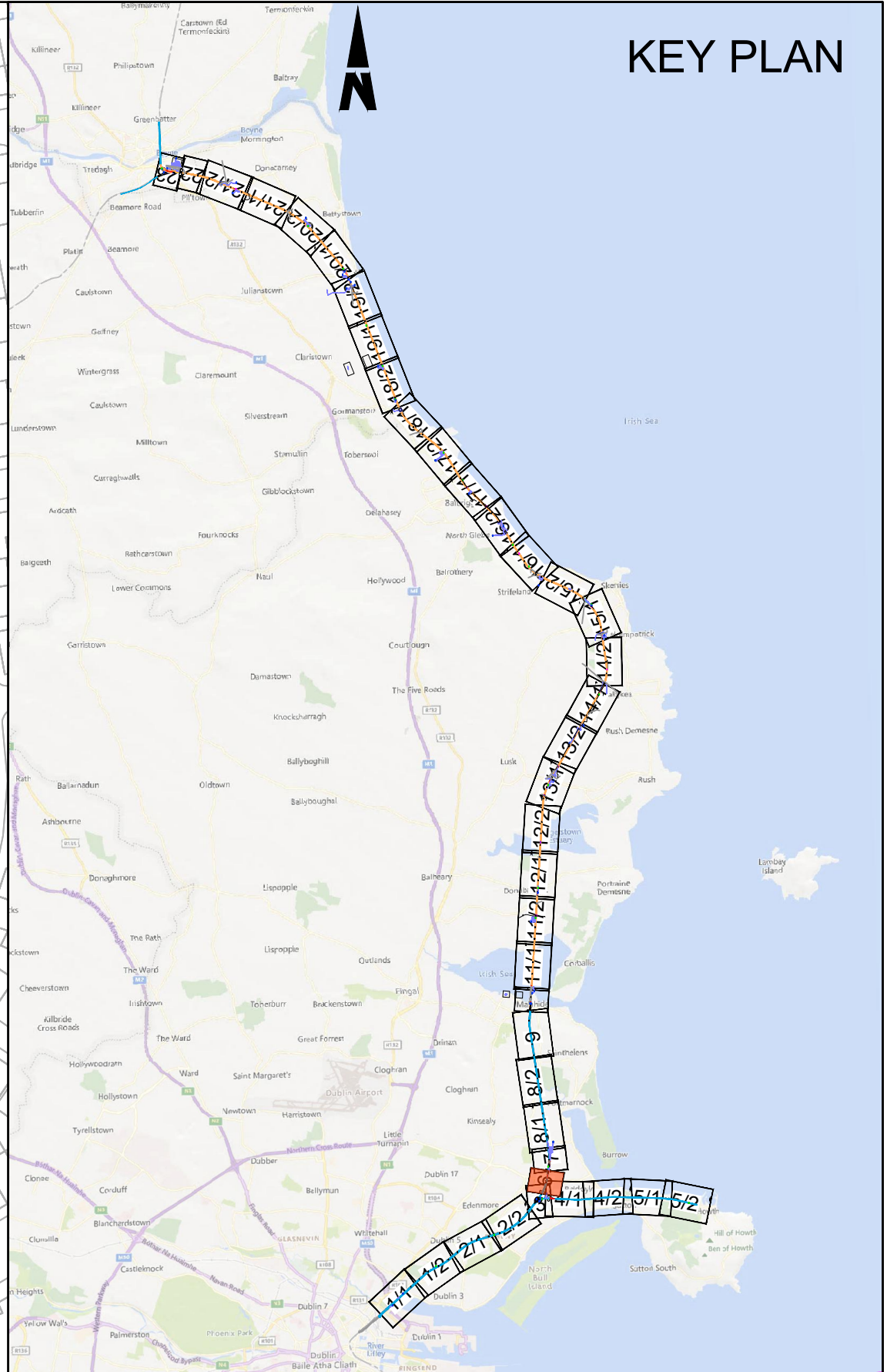
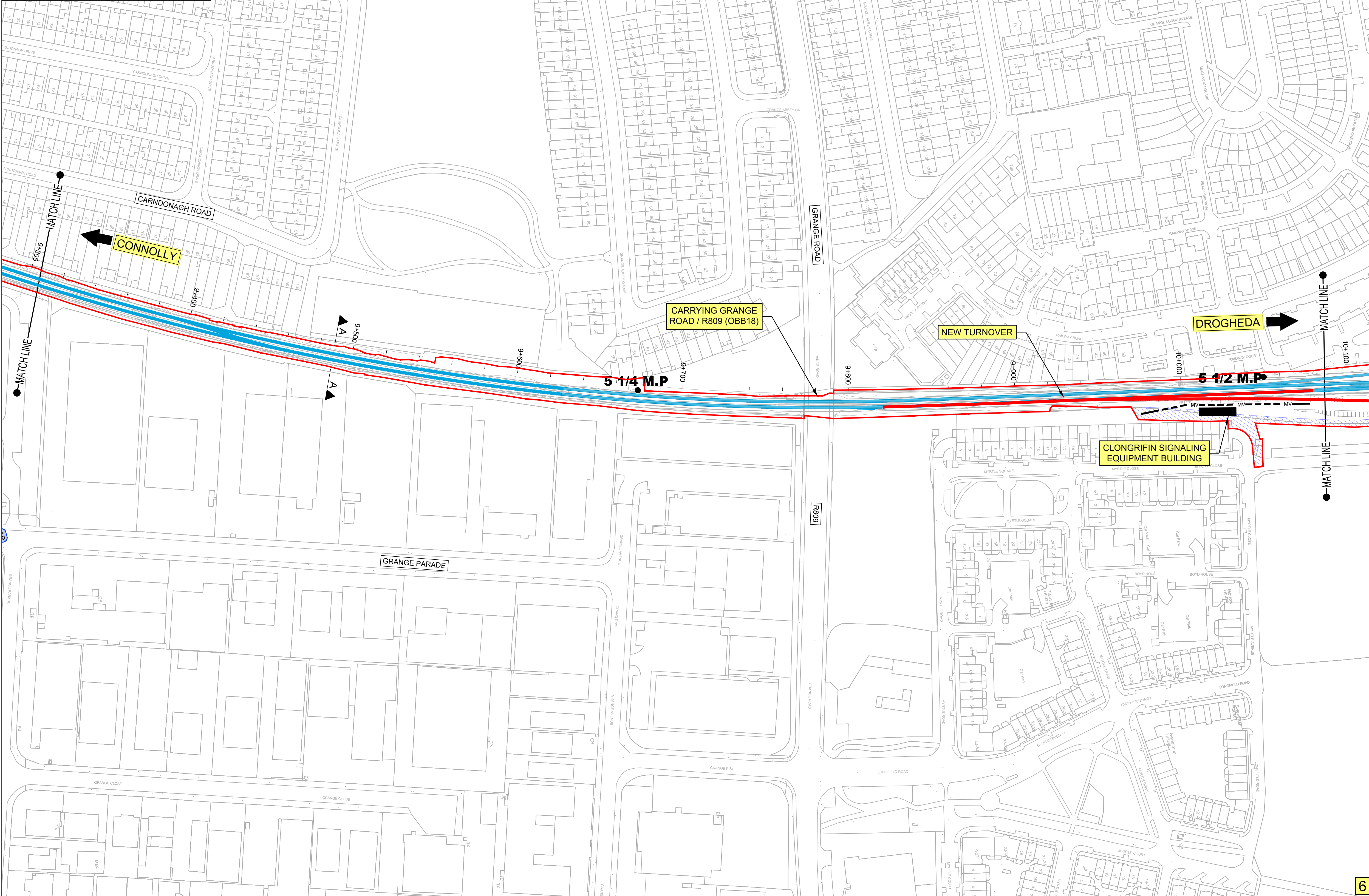


<div>Disclaimer</div> <div>© Irish Rail (2023). This drawing is confidential and the copyright in it is owned by Irish Rail. This drawing must not be either loaned, copied or otherwise reproduced in whole or in part or used for any purpose without the prior permission of Irish Rail.</div> <div>© OpenStreetMap contributors</div> <div>© Ordnance Survey Ireland and Government of Ireland. All O.S. data used for plans are printed under "Copyright Ordnance Survey Ireland 0039723 (OSi Aerial Data or OSi Lidar Data) & 2023 OSi, NMA, 100 (OSi Vector Data)". All elevations are in metres and relate to OSi Geoid Model (OSiGM02) Mean Head as defined by existing Project Control. All Co-ordinates are in Irish Transverse Mercator Grid (ITM) as defined by OSi active GPS station Tallaght College (TLLG).</div>		<div><div><div><div></div><div></div></div><div><div>DART+</div><div>Coastal North</div></div></div><div><div><div><div>NTA</div><div>Óðairen Nálainnta Iompar</div><div>National Transport Authority</div></div><div><div>Tionscatal Éireann</div><div>Project Ireland</div><div>2040</div></div></div></div></div>		<table><tr><th>Rev</th><th>Date</th><th>Drm</th><th>Chk'd</th><th>App'd</th><th>Description</th></tr><tr><td>P01</td><td>21/02/2024</td><td>SMW</td><td>DB</td><td>GS</td><td>PLANNING ISSUE</td></tr><tr><td> </td><td> </td><td> </td><td> </td><td> </td><td> </td></tr><tr><td> </td><td> </td><td> </td><td> </td><td> </td><td> </td></tr><tr><td> </td><td> </td><td> </td><td> </td><td> </td><td> </td></tr><tr><td> </td><td> </td><td> </td><td> </td><td> </td><td> </td></tr></table>	Rev	Date	Drm	Chk'd	App'd	Description	P01	21/02/2024	SMW	DB	GS	PLANNING ISSUE																									<div><div><div><div></div><div></div></div><div><div>Iarnród Éireann</div><div>Irish Rail</div></div></div><div><div>Date</div><div>14/04/2023</div></div><div><div>Scale</div><div>1:2500 @ A1</div><div>1:5000 @ A3</div></div><div><div>Project Code</div><div>D+WP56</div></div><div><div>Originator Code</div><div>ARP</div></div></div> <div><div>Engineering Designer</div><div>ARUP</div><div><div>Drawn</div><div>SR</div></div><div><div>Checked</div><div>RS</div></div><div><div>Approved</div><div>GS</div></div></div> <div><div>QMS Code</div><div>280275-00</div></div>	<div><div>Project Title</div><div>DART+ COASTAL NORTH</div></div> <div><div>Drawing Title</div><div>NON-TECHNICAL SUMMARY DRAWINGS</div><div>BURROW ROAD TO HOWTH STATION AND SURROUNDS</div></div> <div><div>Drawing File Name</div><div>D+WP56-ARP-P3-NL-DR-GE-002005</div></div> <div><div>Sheet Number</div><div>05 of 23</div></div> <div><div>Status</div><div>S3</div></div> <div><div>Rev</div><div>P01</div></div>
Rev	Date	Drm	Chk'd	App'd	Description																																					
P01	21/02/2024	SMW	DB	GS	PLANNING ISSUE																																					

DO NOT SCALE USE FIGURED DIMENSIONS ONLY



TYPICAL MAINLINE OHLE SECTION N A-A



KEY PLAN

NOTES:

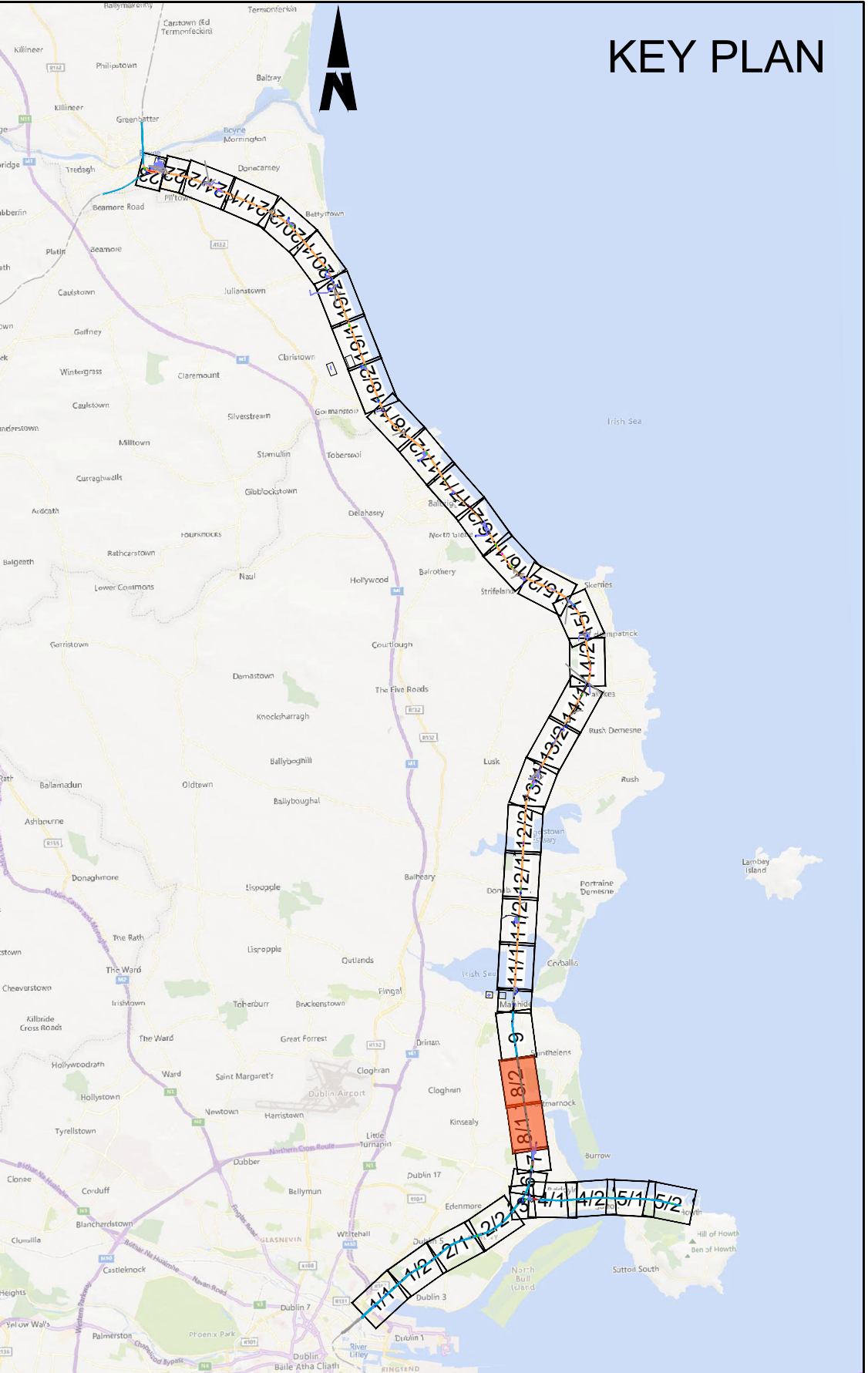
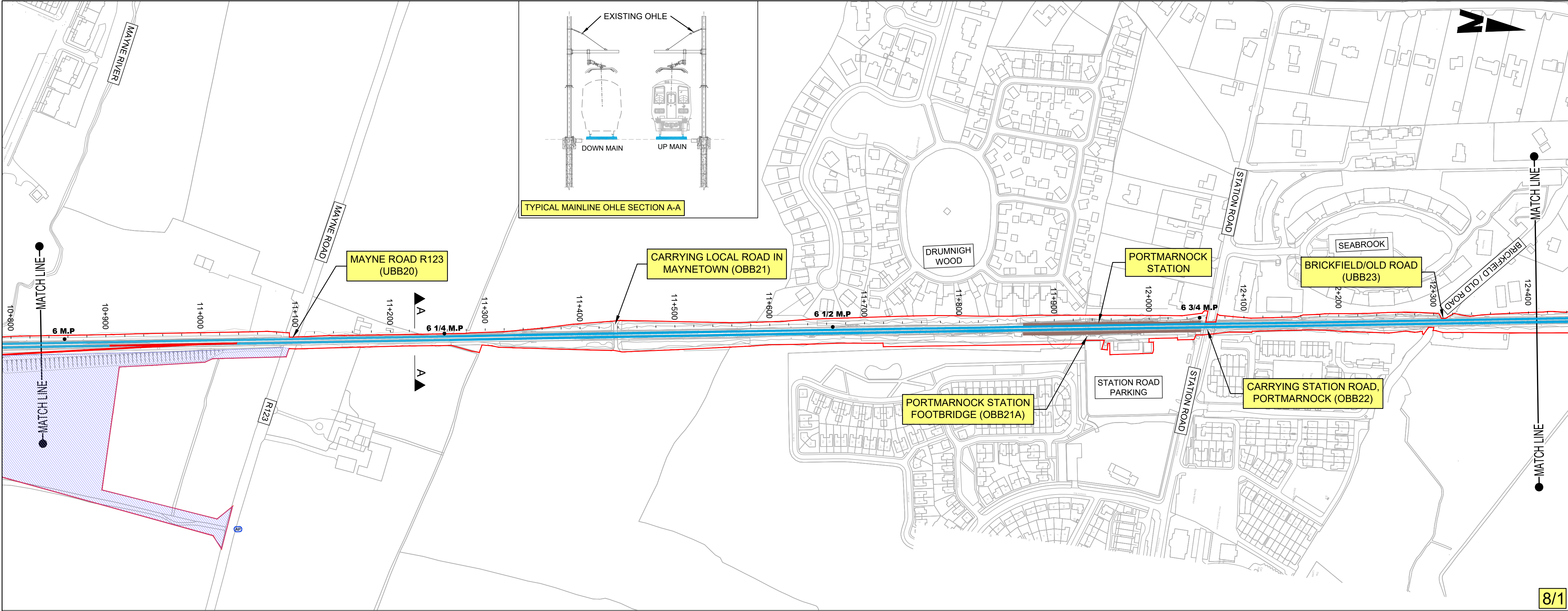
- THIS PLAN MUST BE READ IN CONJUNCTION WITH THE DRAFT RAILWAY ORDER SCHEDULES, THE ENVIRONMENTAL IMPACT ASSESSMENT REPORT AND THE RAILWAY ORDER PLANS.
- PROJECT CHAINAGE IS IN KILOMETRES (KM). ROUTE MILE POSTS ARE SHOWN FOR INFORMATION.

LEGEND:

- DEVELOPMENT BOUNDARY
- AP PROPOSED COMPOUND ACCESS POINTS
- TA EXISTING TRACK ACCESS POINTS
- M.P. MILEPOST
- NEW ELECTRIFICATION AND / OR TRACK WORKS IN EXISTING RAIL CORRIDOR
- EXISTING RAIL CORRIDOR - MINIMAL OR NO WORKS REQUIRED
- EXISTING RAIL TRACK REMOVED
- NEW ELECTRIFICATION IN EXISTING RAIL CORRIDOR
- VIADUCT MODIFICATIONS
- PARAPET MODIFICATIONS
- 38kV 38kV OVERHEAD DIVERSION
- 38kV 38kV UNDERGROUND DIVERSION
- MV MV OVERHEAD DIVERSION
- MV MV UNDERGROUND DIVERSION
- LV LV OVERHEAD DIVERSION
- LV LV UNDERGROUND DIVERSION
- Eir EIR OVERHEAD DIVERSION
- EIR EIR UNDERGROUND DIVERSION
- BT BT UNDERGROUND DIVERSION
- F COMBINED SEWER DIVERSION
- As xx EXISTING UTILITIES ASSUMED POSITION
- PROPOSED SUBSTATION / SUBSTATION COMPOUND
- CONSTRUCTION COMPOUND
- NEW, PROPOSED OR MODIFIED INFRASTRUCTURE
- EXISTING STATION
- PROPOSED PLATFORM
- LOCAL AUTHORITY BOUNDARY
- BRIDGES
- OBXX EXISTING BRIDGE / ROAD OVER RAILWAY CORRIDOR
- UBXX EXISTING BRIDGE / ROAD/RIVER UNDER RAILWAY CORRIDOR

<div>Disclaimer</div> <div>© Irish Rail (2023). This drawing is confidential and the copyright in it is owned by Irish Rail. This drawing must not be either loaned, copied or otherwise reproduced in whole or in part or used for any purpose without the prior permission of Irish Rail.</div> <div>© OpenStreetMap contributors</div> <div>© Ordnance Survey Ireland and Government of Ireland. All O.S. data used for plans are printed under "Copyright Ordnance Survey Ireland 0038723 (OSI Aerial Data or OSI Lidar Data) & 2023/OSI_NMA_100 (OSI Vector Data)". All elevations are in metres and relate to OSI Geoid Model (OSGM02) Mean Head as defined by existing Project Control. All Co-ordinates are in Irish Transverse Mercator Grid (ITM) as defined by OSI active GPS station Tallaght College (TLLG).</div>		<div><div><div><div></div><div></div><div></div></div><div><div>DART+</div><div>Coastal North</div></div></div><div><div><div><div></div><div></div><div></div></div><div><div>NTA</div><div><div>Údaráil Náisiúnta Iomparáil</div><div>National Transport Authority</div></div></div></div><div><div>Tionscail Éireann</div><div>Project Ireland</div><div>2040</div></div></div></div>		<table><tr><th>Rev</th><th>Date</th><th>Drm</th><th>Chk'd</th><th>App'd</th><th>Description</th></tr><tr><td>P01</td><td>21/02/2024</td><td>SMW</td><td>DB</td><td>GS</td><td>PLANNING ISSUE</td></tr><tr><td> </td><td> </td><td> </td><td> </td><td> </td><td> </td></tr><tr><td> </td><td> </td><td> </td><td> </td><td> </td><td> </td></tr><tr><td> </td><td> </td><td> </td><td> </td><td> </td><td> </td></tr></table>	Rev	Date	Drm	Chk'd	App'd	Description	P01	21/02/2024	SMW	DB	GS	PLANNING ISSUE																			<div><div><div><div></div><div></div><div></div></div><div><div>Iarnród Éireann</div><div>Irish Rail</div></div></div><div><div><div></div><div></div><div></div></div><div><div>ARUP</div></div></div></div> <table><tr><td>Date</td><td>14/04/2023</td><td>Scale</td><td>1:1250 @ A1 1:2500 @ A3</td><td>Drawn</td><td>SR</td><td>Checked</td><td>RS</td><td>Approved</td><td>GS</td></tr><tr><td>Project Code</td><td>D+WP56</td><td>Originator Code</td><td>ARP</td><td>QMS Code</td><td colspan="4">280275-00</td></tr></table>	Date	14/04/2023	Scale	1:1250 @ A1 1:2500 @ A3	Drawn	SR	Checked	RS	Approved	GS	Project Code	D+WP56	Originator Code	ARP	QMS Code	280275-00				<table><tr><td colspan="2">Project Title</td><td colspan="2">DART+ COASTAL NORTH</td></tr><tr><td colspan="2">Drawing Title</td><td colspan="2">NON-TECHNICAL SUMMARY DRAWINGS SOUTH OF CLONGRIFIN STATION AND SURROUNDS</td></tr><tr><td>Drawing File Name</td><td>D+WP56-ARP-P3-NL-DR-GE-002006</td><td>Sheet Number</td><td>06 of 23</td><td>Status</td><td>S3</td><td>Rev</td><td>P01</td></tr></table>	Project Title		DART+ COASTAL NORTH		Drawing Title		NON-TECHNICAL SUMMARY DRAWINGS SOUTH OF CLONGRIFIN STATION AND SURROUNDS		Drawing File Name	D+WP56-ARP-P3-NL-DR-GE-002006	Sheet Number	06 of 23	Status	S3	Rev	P01
Rev	Date	Drm	Chk'd	App'd	Description																																																																		
P01	21/02/2024	SMW	DB	GS	PLANNING ISSUE																																																																		
Date	14/04/2023	Scale	1:1250 @ A1 1:2500 @ A3	Drawn	SR	Checked	RS	Approved	GS																																																														
Project Code	D+WP56	Originator Code	ARP	QMS Code	280275-00																																																																		
Project Title		DART+ COASTAL NORTH																																																																					
Drawing Title		NON-TECHNICAL SUMMARY DRAWINGS SOUTH OF CLONGRIFIN STATION AND SURROUNDS																																																																					
Drawing File Name	D+WP56-ARP-P3-NL-DR-GE-002006	Sheet Number	06 of 23	Status	S3	Rev	P01																																																																

DO NOT SCALE USE FIGURED DIMENSIONS ONLY

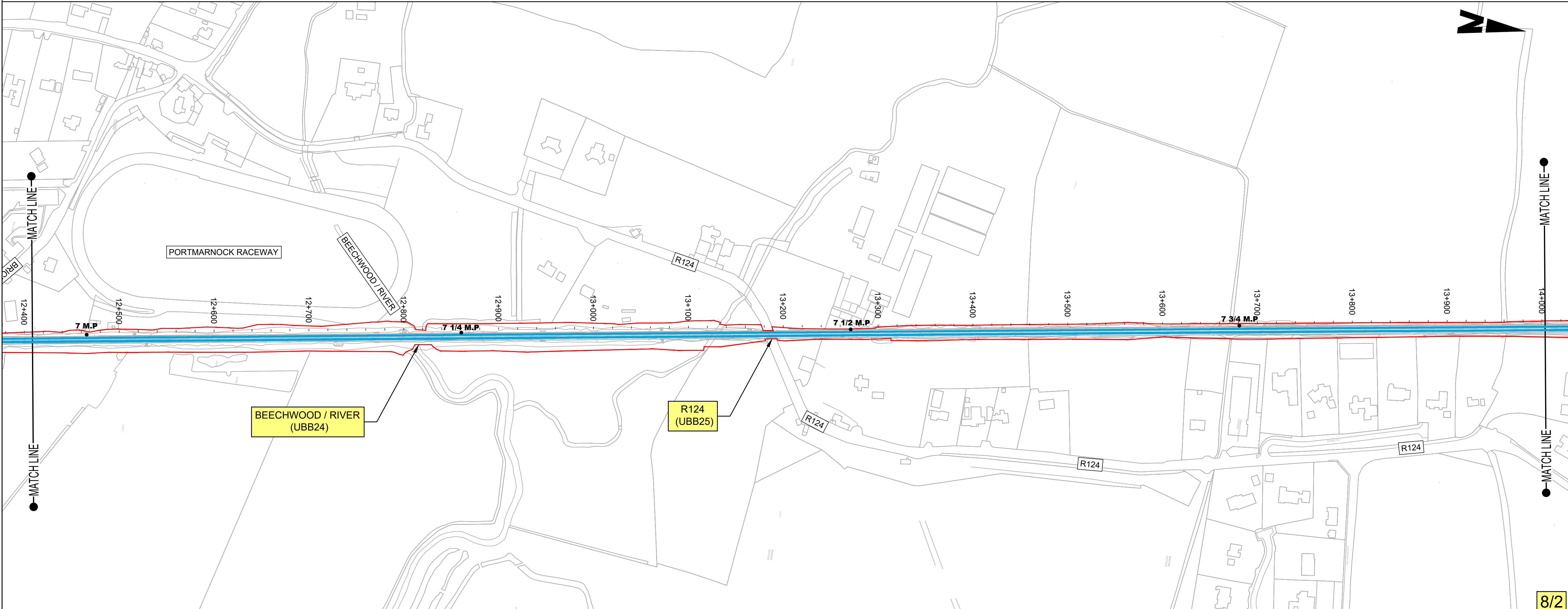


NOTES:

- THIS PLAN MUST BE READ IN CONJUNCTION WITH THE DRAFT RAILWAY ORDER SCHEDULES, THE ENVIRONMENTAL IMPACT ASSESSMENT REPORT AND THE RAILWAY ORDER PLANS.
- PROJECT CHAINAGE IS IN KILOMETRES (KM). ROUTE MILE POSTS ARE SHOWN FOR INFORMATION.

LEGEND:

- DEVELOPMENT BOUNDARY
- PROPOSED COMPOUND ACCESS POINTS
- EXISTING TRACK ACCESS POINTS
- MILEPOST
- NEW ELECTRIFICATION AND / OR TRACK WORKS IN EXISTING RAIL CORRIDOR
- EXISTING RAIL CORRIDOR - MINIMAL OR NO WORKS REQUIRED
- EXISTING RAIL TRACK REMOVED
- NEW ELECTRIFICATION IN EXISTING RAIL CORRIDOR
- VIADUCT MODIFICATIONS
- PARAPET MODIFICATIONS
- 38KV OVERHEAD DIVERSION
- 38KV UNDERGROUND DIVERSION
- MV OVERHEAD DIVERSION
- MV UNDERGROUND DIVERSION
- LV OVERHEAD DIVERSION
- LV UNDERGROUND DIVERSION
- EIR OVERHEAD DIVERSION
- EIR UNDERGROUND DIVERSION
- BT UNDERGROUND DIVERSION
- COMBINED SEWER DIVERSION
- EXISTING UTILITIES ASSUMED POSITION
- PROPOSED SUBSTATION / SUBSTATION COMPOUND
- CONSTRUCTION COMPOUND
- NEW, PROPOSED OR MODIFIED INFRASTRUCTURE
- EXISTING STATION
- PROPOSED PLATFORM
- LOCAL AUTHORITY BOUNDARY
- BRIDGES
- OBXX EXISTING BRIDGE / ROAD OVER RAILWAY CORRIDOR
- UBXX EXISTING BRIDGE / ROAD/RIVER UNDER RAILWAY CORRIDOR



<div>Disclaimer</div> <div>© Irish Rail (2023). This drawing is confidential and the copyright in it is owned by Irish Rail. This drawing must not be either loaned, copied or otherwise reproduced in whole or in part or used for any purpose without the prior permission of Irish Rail.</div> <div>© OpenStreetMap contributors</div> <div>© Ordnance Survey Ireland and Government of Ireland. All O.S. data used for plans are printed under "Copyright Ordnance Survey Ireland 0038723 (OSI Aerial Data or OSI Lidar Data) & 2023/OSI_NMA_100 (OSI Vector Data)". All elevations are in metres and relate to OSI Geoid Model (OSGM02) Mean Head as defined by existing Project Control. All Co-ordinates are in Irish Transverse Mercator Grid (ITM) as defined by OSI active GPS station Tallaght College (TLLG).</div>		<div><div><div><div></div><div></div><div></div></div><div><div>DART+</div><div>Coastal North</div></div></div><div><div><div><div></div><div></div><div></div></div><div><div>NTA</div><div><div>Óðaire Náisiúnta Iomparáil</div><div>National Transport Authority</div></div></div></div><div><div><div>Tionscadal Éireann</div><div>Project Ireland</div><div>2040</div></div></div></div></div>		<table><tr><th>Rev</th><th>Date</th><th>Drn</th><th>Chk'd</th><th>App'd</th><th>Description</th></tr><tr><td>P01</td><td>21/02/2024</td><td>SMW</td><td>DB</td><td>GS</td><td>PLANNING ISSUE</td></tr><tr><td> </td><td> </td><td> </td><td> </td><td> </td><td> </td></tr><tr><td> </td><td> </td><td> </td><td> </td><td> </td><td> </td></tr><tr><td> </td><td> </td><td> </td><td> </td><td> </td><td> </td></tr></table>	Rev	Date	Drn	Chk'd	App'd	Description	P01	21/02/2024	SMW	DB	GS	PLANNING ISSUE																			<div><div><div><div></div><div></div><div></div></div><div><div>Iarnród Éireann</div><div>Irish Rail</div></div></div><div><div>Date</div><div>14/04/2023</div></div><div><div>Scale</div><div>1:2500 @ A1</div><div>1:5000 @ A3</div></div><div><div>Project Code</div><div>D+WP56</div></div><div><div>Originator Code</div><div>ARP</div></div></div>	<div><div>Engineering Designer</div><div><div>ARUP</div></div><div><div>Drawn</div><div>SR</div></div><div><div>Checked</div><div>RS</div></div><div><div>Approved</div><div>GS</div></div><div><div>QMS Code</div><div>280275-00</div></div></div>	<div><div>Project Title</div><div>DART+ COASTAL NORTH</div></div> <div><div>Drawing Title</div><div>NON-TECHNICAL SUMMARY DRAWINGS PORTMARNOCK STATION AND SURROUNDS</div></div> <div><div><div>Drawing File Name</div><div>D+WP56-ARP-P3-NL-DR-GE-002008</div></div><div><div>Sheet Number</div><div>08 of 23</div></div><div><div>Status</div><div>S3</div></div><div><div>Rev</div><div>P01</div></div></div>
Rev	Date	Drn	Chk'd	App'd	Description																																
P01	21/02/2024	SMW	DB	GS	PLANNING ISSUE																																

DO NOT SCALE USE FIGURED DIMENSIONS ONLY